

THE LABORATORY OF THE FACULTY OF SPORTS AND PHYSICAL EDUCATION AT ARTOIS UNIVERSITY



SHERPAS Lab

Third Strategic Pillar of Artois University
Reconstruction of social belonging

A laboratory of Sciences and Techniques
of Physical and Sports Activities

Team 2 of l'URéPSSS (ULR 7369)

14 Teacher-researchers – 4 Associate researchers
– 10 Doctorate students

SHERPAS LAB

Faculty of Sports and Physical Education
Chemin du Marquage - 62800 LIÉVIN

Secrétariat :

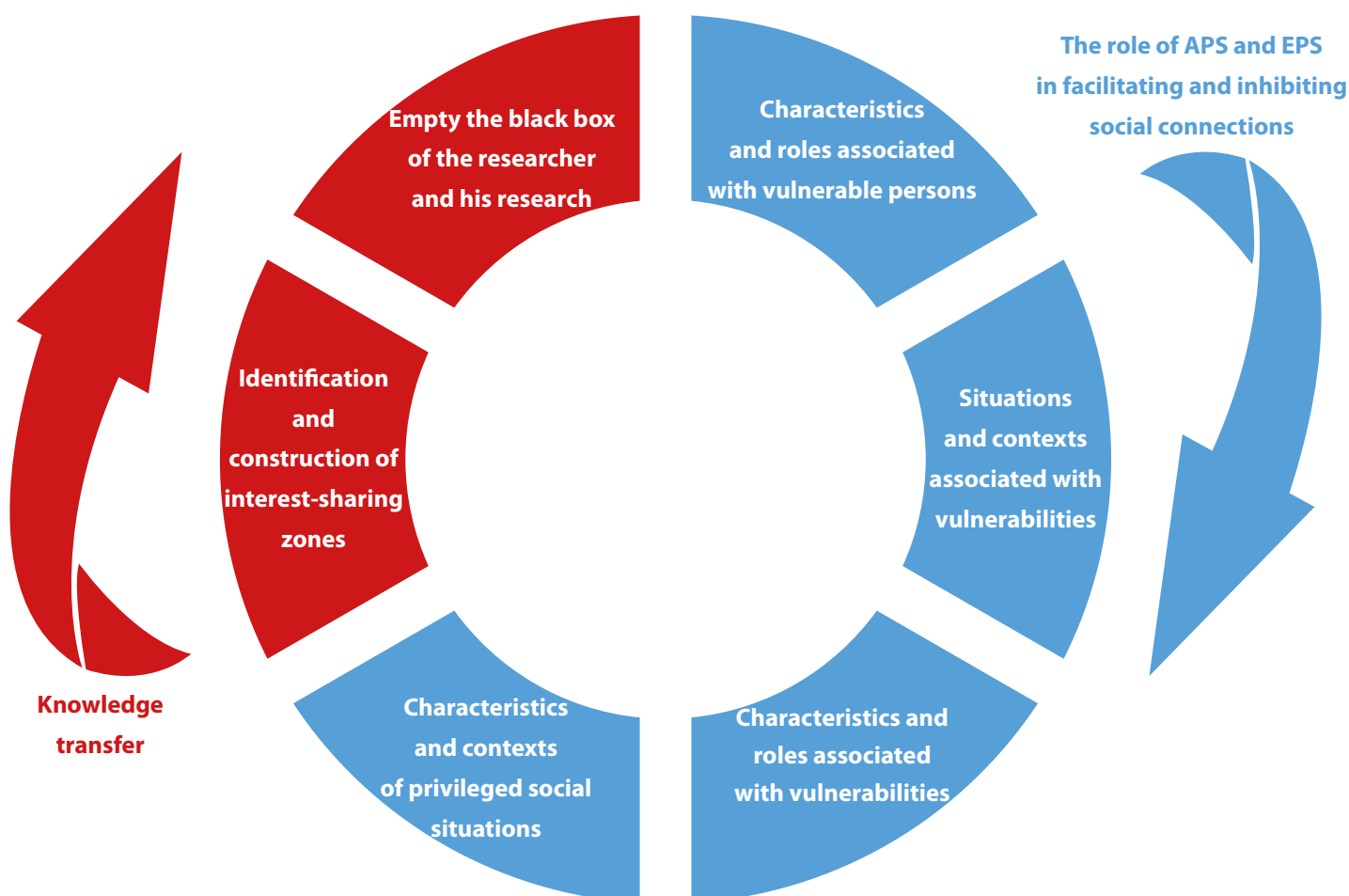
Coralie Dabin-Reske
coralie.dabin-reske@univ-artois.fr

PRINCIPLES AND PROGRAM OF THE SHERPAS LAB

The approach adopted by the SHERPAS Lab since its foundation in 2002 promotes dialogue between disciplines of sociology, history, psychology and physiology, and respect for each other's academic practices. These scientific approaches shape the identity of the SHERPAS Lab and place it at the intersection of science and technology of physical sports activities and social sciences. For a quarter of a century, the lab has been committed to studying sports as a scientific topic as well as a social construct. In 2018 a new scientific program was launched, with the goal to interpret the use of the body in the context of physical and sports activities (PSA) and of physical and sports education (PSE), within the framework of the reconstruction and disintegration of social belonging. Our studies aim to examine whether PSA and PSE affect the construction or the consistency of the recognition and protection of the personal and social identities and if so, to what extent.

We study these relationships from the opposite perspective: we also seek to know how the isolation of individuals, the threatened cohesion of society, and the decline of institutions can influence the APS and the EPS. During our research carried out in various contexts and fields, the focus shifted to situations where physical, social, economic, psychological vulnerabilities are detectable. Through adopting multidisciplinary scientific approaches, the conscious use of materials and measures, and being aware of the limitations of these research tools, the lab members carry out high quality research of vulnerabilities. This program is completely in line with the third strategic pillar of Artois University.

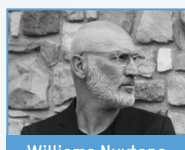
RESEARCH TOPICS



TEAM

(for a more detailed introduction please visit:
<http://sherpas.univ-artois.fr/Equipe>)

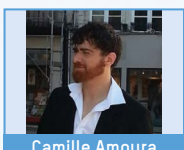
Teacher-researchers



Williams Nuytens
Director



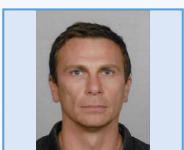
Nathalie Jelen
Assistant Director



Camille Amoura
Representative of
Teacher-researchers



Denis Bernardeau-
Moreau



Nicolas Blondel



Isabelle Caby



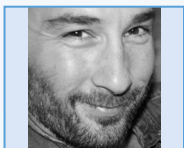
Annie Carton



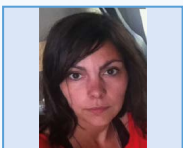
Stanislas Frenkiel



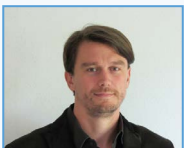
Laurence Munoz



Nicolas Penin



Sarah Pochon



Loïc Sallé

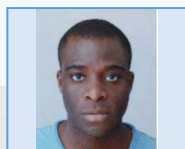


Claire Toulotte



Gabor Orosz

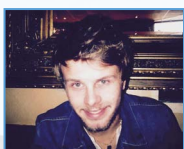
Research associates



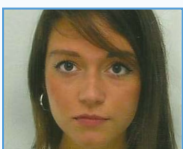
Nounagnon Agbangla



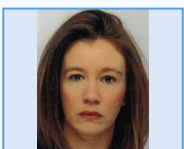
Anaïs Déas



Thibault Delfavero



Elise Decorte



Julie Duftos



Hugues Edik



Arthur Hochede



Grégoire Duvant



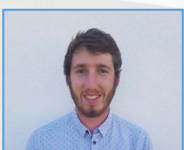
Cindy Louchet



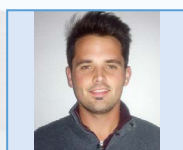
Gianni Marasa
Representative
of junior researchers



Kévin Rigaud



Mathieu Ternoy



Thomas Walgraef



Laure Sochala



Lilla Török

Junior researchers

SOME PARTNERS



DRJSCS
Direction Régionale de la Jeunesse,
des Sports et de la Cohésion Sociale



Follow SHERPAS Lab on Twitter :
[@SHERPASArtois](https://twitter.com/SHERPASArtois)



Visit the website of the
SHERPAS Lab :
<http://sherpas.univ-artois.fr/>